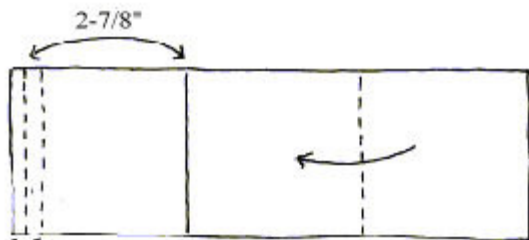
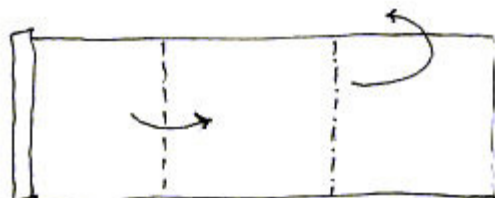


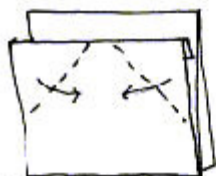
Traditional Kimono



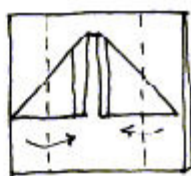
1/8" Start with paper color side down. Fold into equal thirds lengthwise then unfold.



Fold 1/8" x 2" to make collar then fold left to right and right to back.



Turn unit 90-degrees. Fold corners of top layer to center, leaving 1/8" spacing.



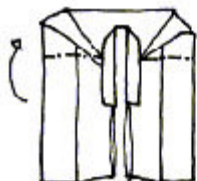
Fold edges to center.



Crease well.



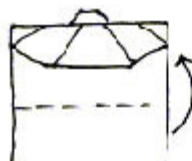
Open top layers with fingers and squash fold at an angle. Tuck edges under collar.



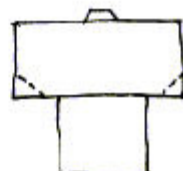
Fold top section to the back.



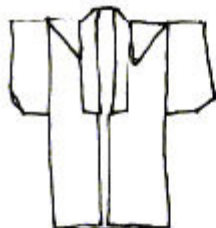
Turn unit over.



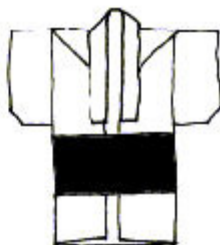
Fold single layer to top edge.



Fold corners at bottom of sleeves and reverse-fold.



Glue sleeve edges and back to flatten.



Attach obi belt with glue.

Traditional Kimono adaptation by Karen Thomas