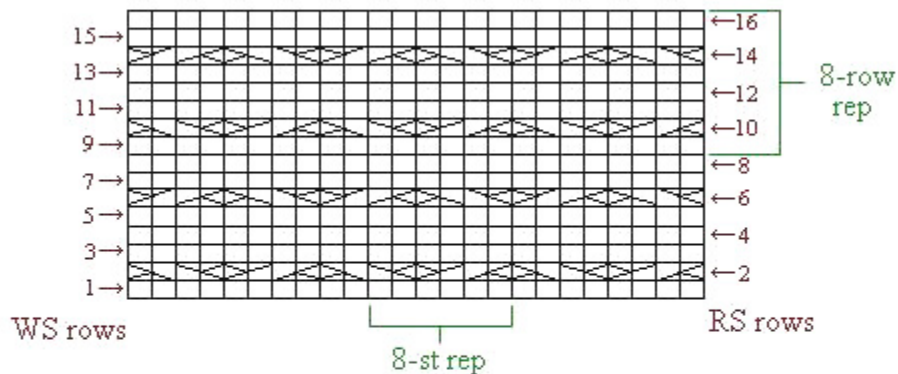
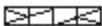



Honeycomb



Stitch Key

□ = k on RS, p on WS ■ = p on RS, k on WS

 = 4-st Right Cross, place 2 sts
 onto cable ndl, hold in back,
 k next 2 sts, k sts from cable ndl

 = 4-st Left Cross, place 2 sts
 onto cable ndl, hold in front,
 k next 2 sts, k sts from cable ndl