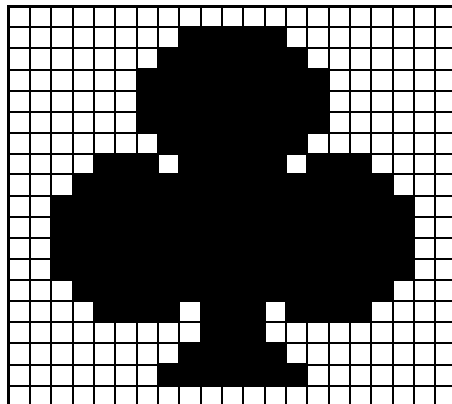
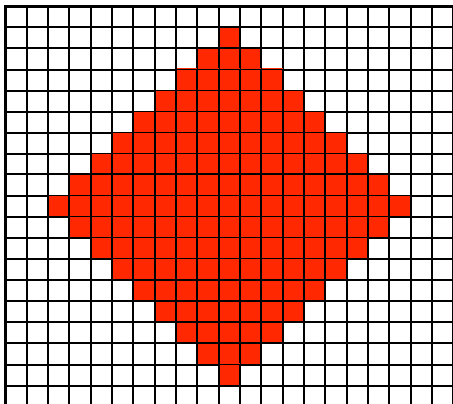
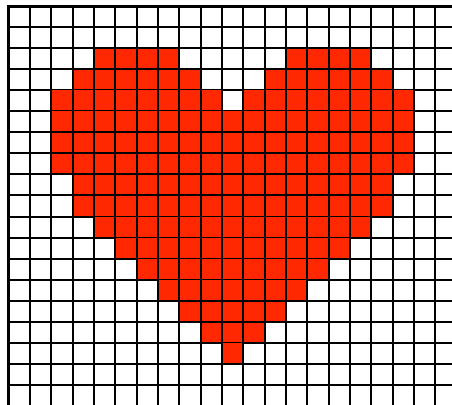
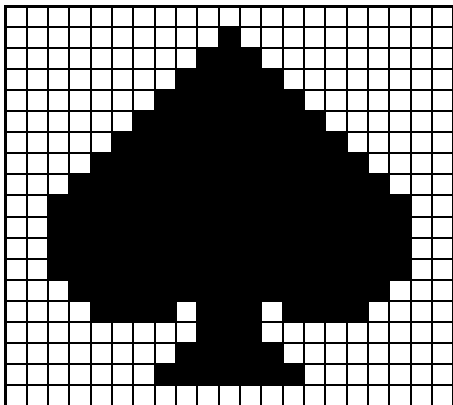
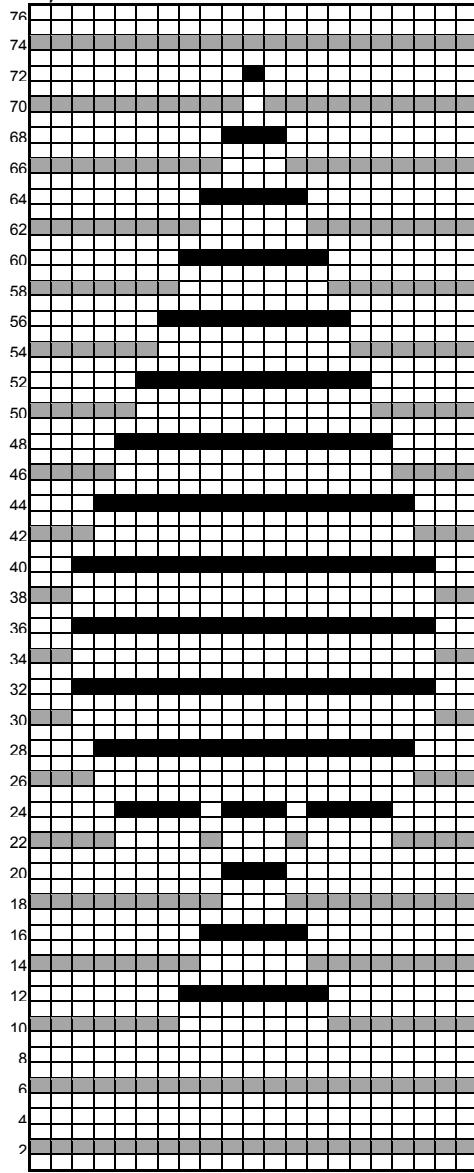


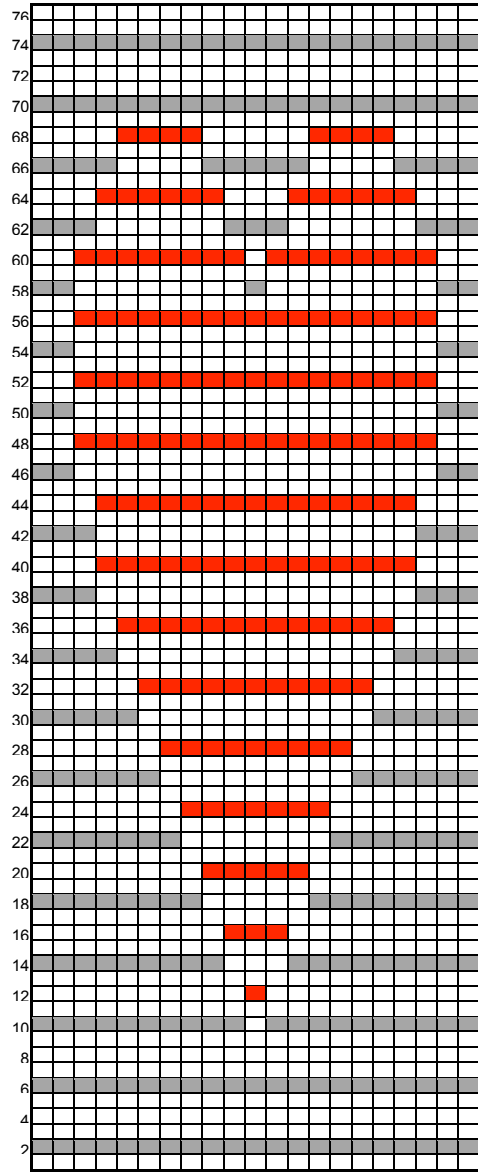
The images that will appear on the scarf are charted as follows:



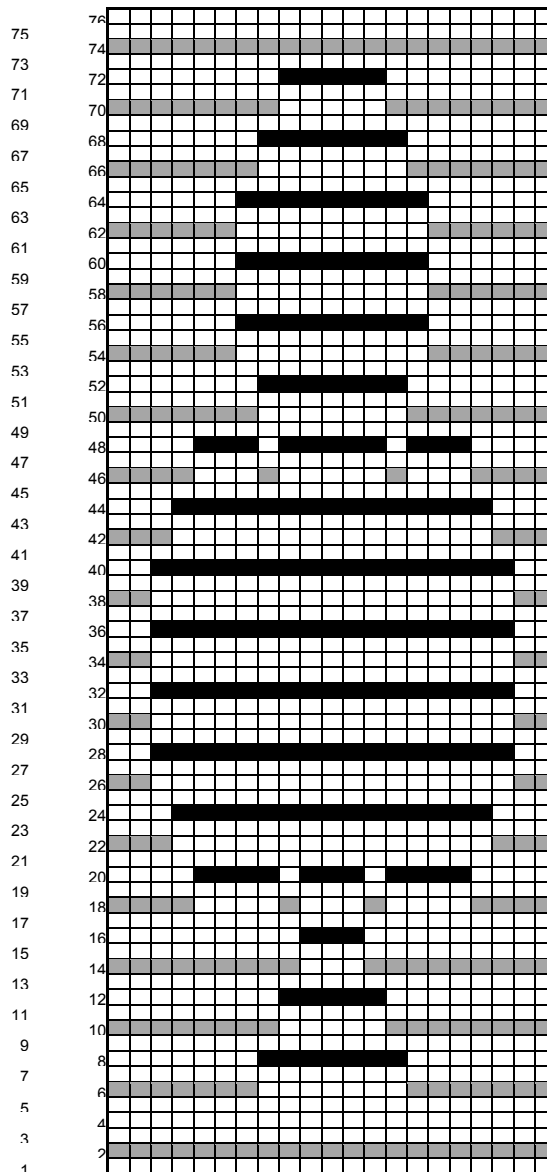
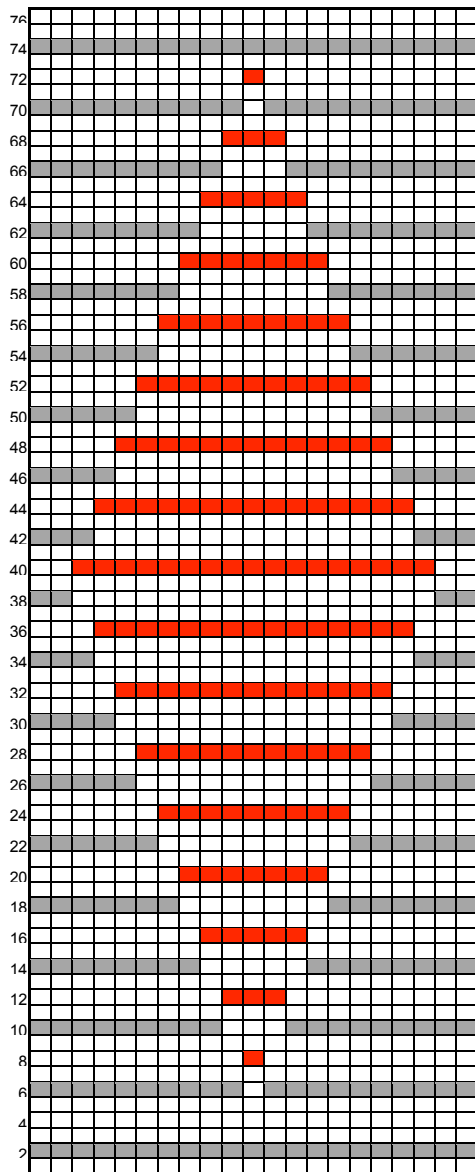
These are the knitting charts to follow. Work the spade first, heart second, diamond third, and club last.



75
73
71
69
67
65
63
61
59
57
55
53
51
49
47
45
43
41
39
37
35
33
31
29
27
25
23
21
19
17
15
13
11
9
7
5
3
1



75
73
71
69
67
65
63
61
59
57
55
53
51
49
47
45
43
41
39
37
35
33
31
29
27
25
23
21
19
17
15
13
11
9
7
5
3
1



Finishing:

With the remaining stitches from each section, connect using the 3-needle bind off. Placing the stitches from the first section onto a needle and align the other stitches from the second section with them. With a third needle and MC yarn, knit through the first stitch of both sections. Knit through the second stitch of both sections and pass the second stitch over the first stitch, as with a regular bind off. Continue to the end and pull the yarn through the last remaining stitch. Weave in ends and enjoy your scarf!