

FUN IN THE SUN

Beach Diorama by Sandi Genovese

Bring a little sunshine inside with a beach diorama that features lots of photos. The diorama is made up of four layers of paper, with each layer decorated with beach themed photos and die-cuts. The three-dimensionality is achieved by staggering the lengths of each layer with the shortest in front and the longest in back.

1. Trim blue paper to 7-1/4" x 9-3/4". Use a craft knife to cut out a 4" x 5-1/4" rectangular window in the middle (Figure A).
2. Cut a strip of sand colored paper 1-1/4" x 10-1/2" (Figure B).
3. Die-cut the wave border from two shades of blue and layer the lighter blue on top leaving a narrow band of darker blue around the edges. Add white caps to the waves. Attach the wave border to a narrow strip of matching blue paper making the wave border 1-1/4" inches taller (Figure C).
4. Cut a yellow background 7-1/4" x 12-1/2".
5. Crop around beach photos – if using color copies, fasten photo to colored paper to add thickness to the photos.
6. Attach decorated palm tree and beach umbrella to the diorama front (Figure D).
7. Attach cropped photos to diorama front and each of the other layers (Figures E, F & G).



Figure A

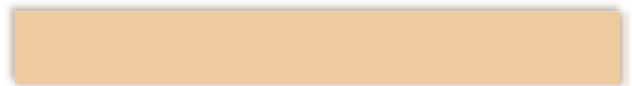


Figure B

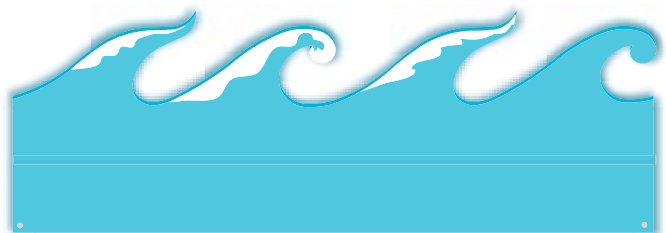


Figure C

Figure D

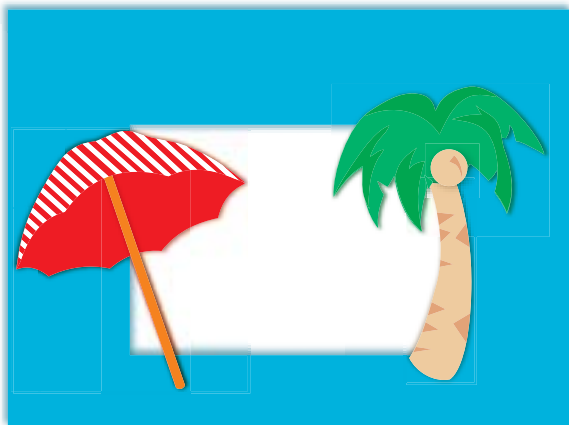


Figure E



8. Hand write (or computer print) a title on a vellum sticker that is matted on a white strip (Figure H).
9. Punch holes in all four corners of front and back layers. The two inside layers should also be punched at each end. (All of the layers should align when the diorama is completed so that the front cover hides the layers behind.) (Figure C, E, F & G).
10. Align the holes in all four layers. Poke a fastener through all of the layers to complete the diorama. The fasteners can be removed from one end, allowing you to store the diorama flat when not on display (Figure H).

Materials

- Die-Cuts – Ellison® & Sizzix®
- Paper – Canson®
- Stickers – Mrs. Grossman's®
- Fasteners – Chaterbox®
- Adhesive – Xyron® & Double Stick Tape



Figure F

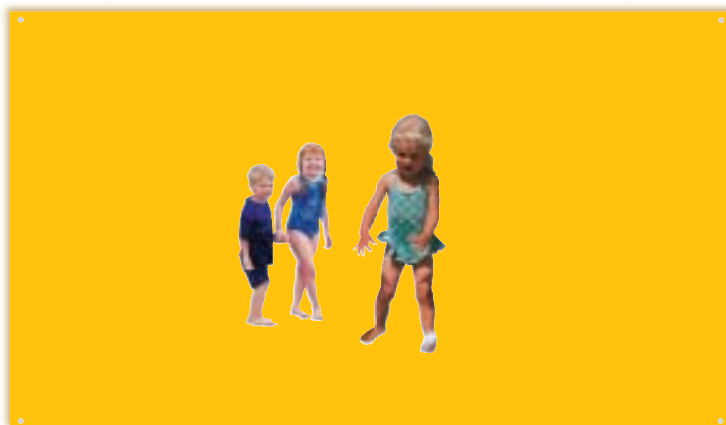


Figure G



Figure H