

Very Simple Ribbed Corset

With Lace Edging and Crocheted Trim

Annie Modesitt

Materials

Size 5 Circular needles (or size for gauge)
2 Stitch Markers
Darning Needle
Size E Crochet Hook
Buttons for front (22 - 28, varies)

Yarn: 600 (650, 700, 750, 800, 850) yds of
worsted weight yarn

Gauge = 5.5 sts = 1" on size 5 needles or
size to achieve gauge.

Corset Tank Top

With a single strand of yarn and needles to
obtain gauge, cast on 199 (219, 239, 259,
289, 309) sts. Knit 1 row.

Neckline Lace Motif

Either working off of chart or following
written instructions, work lace pattern as
follows:

Row 1: K4, place marker (pm), (k1, YO, k3,
VDD, k3, YO) rep 19 (21, 23, 25, 28, 30)
times, k1, pm, k4 - 199 (219, 239, 259, 289,
309) sts. Row 2: Knit all sts, slipping
markers.

Rep rows 1 & 2 of charted lace pat twice
more - 6 rows total.

Row 3:: K4, slip marker (sm), (k1, YO, k3,
VDD, k3, YO) rep 19 (21, 23, 25, 28, 30)
times, k1, sm, k4. Row 4: K4, sm, purl to
next marker, sm, k4
Rep rows 3 & 4 of charted lace pat until
piece meas 3 (3-1/4, 3-1/2, 3-3/4, 3-3/4, 4) " /
(8.3, 9, 9.6, 9.6, 10.3) cm from cast on row,
end with a WS row.

Armholes

Continuing working outer 4 sts on each
edge in garter st, work armholes as foll:

Next row (RS): K4, work 29 (33, 36, 39, 43,
47) sts, loosely bind off next 38 (40, 44, 48,
54, 56) sts, knit next 57 (65, 71, 77, 87, 95)
sts, bind off next 38 (40, 44, 48, 54, 56) sts,
knit 29 (33, 36, 39, 43, 47) sts, sm, k4

Next row (WS): K4, sm, p 29 (33, 36, 39, 43,
47) sts, cast on 38 (40, 44, 48, 53, 55) sts,
purl next 57 (65, 71, 77, 87, 95) sts, cast on
38 (40, 44, 48, 53, 55) sts, purl next 29 (33,
36, 39, 43, 47) sts, sm, k4 - 197 (217, 237,
257, 285, 305) sts rem total.

Next row (RS): k4, sm, (k2, p2) rep to 2 sts
before next marker, k2, sm, k4.

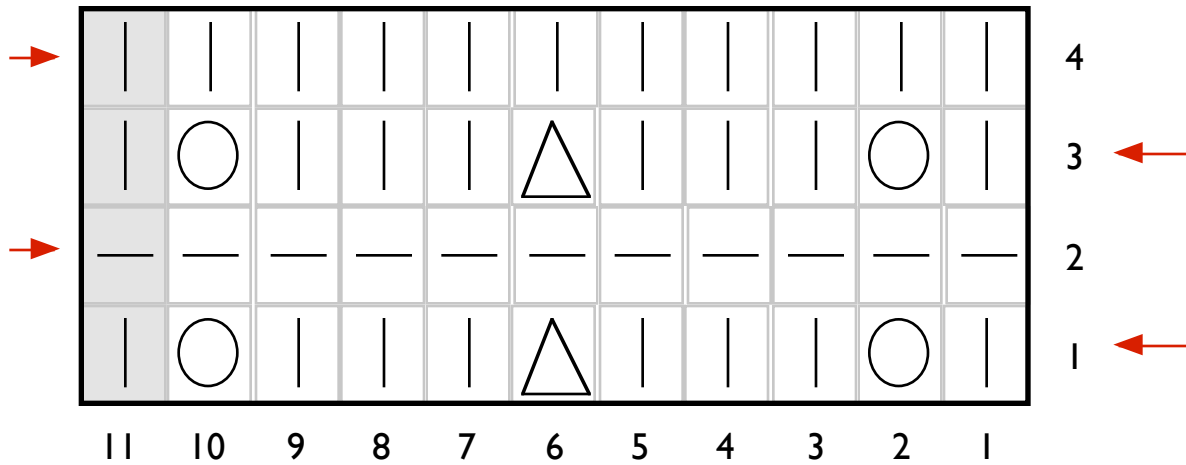
Next row (WS): K4, sm, (p2, k2) rep to 2
sts before next marker, p2, sm, k2

Rep last 2 rows until piece meas 22-1/4 (23-
1/4, 24-1/2, 25-3/4, 27-1/4, 29-1/4) " /
(59.6, 62.8, 66, 69.9, 75) cm or desired
length. BO very loosely in rib.

Crocheted Trim

With a single strand of yarn and size E
crochet hook and starting at lower left
front, sc 197 (217, 237, 257, 285, 305) sts
around bottom edge, sc 3 sts into corner, sc
5 (5, 2, 3, 5, 5) sts up right front edge, (ch 2,
sk 2, sc next 3) rep along right front edge,
creating a buttonhole with each ch2/sk2. III
(116, 123, 129, 136, 146) will be worked
along right front edge, sc 3 sts into corner.

Sc 199 (219, 239, 259, 289, 309) sts along
neck edge, sc 3 into corner, sc III (116,
123, 129, 136, 146) sts down left front edge,
sc 3 sts into corner, Tie off last st, FO,
weave in loose ends.



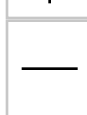
VDD (*Vertical Double Decrease*) - Slip 2 sts as if to K2tog, k1, pass slipped sts over the knit st.



YO (*Yarn Over*) - Wrap yarn over needle before inserting into next stitch.



KI (*Knit 1*) - On Right side, KI. On Wrong side, PI.



PI (*Purl 1*) - On Right side, PI. On Wrong side, KI.

Row 1: (KI, YO, k3, VDD, k3, YO) rep to end, end k1 (grey stitch)

Row 2: Knit all sts

Row 3: (KI, YO, k3, VDD, k3, YO) rep to end, end k1 (grey stitch)

Row 4: Purl all sts