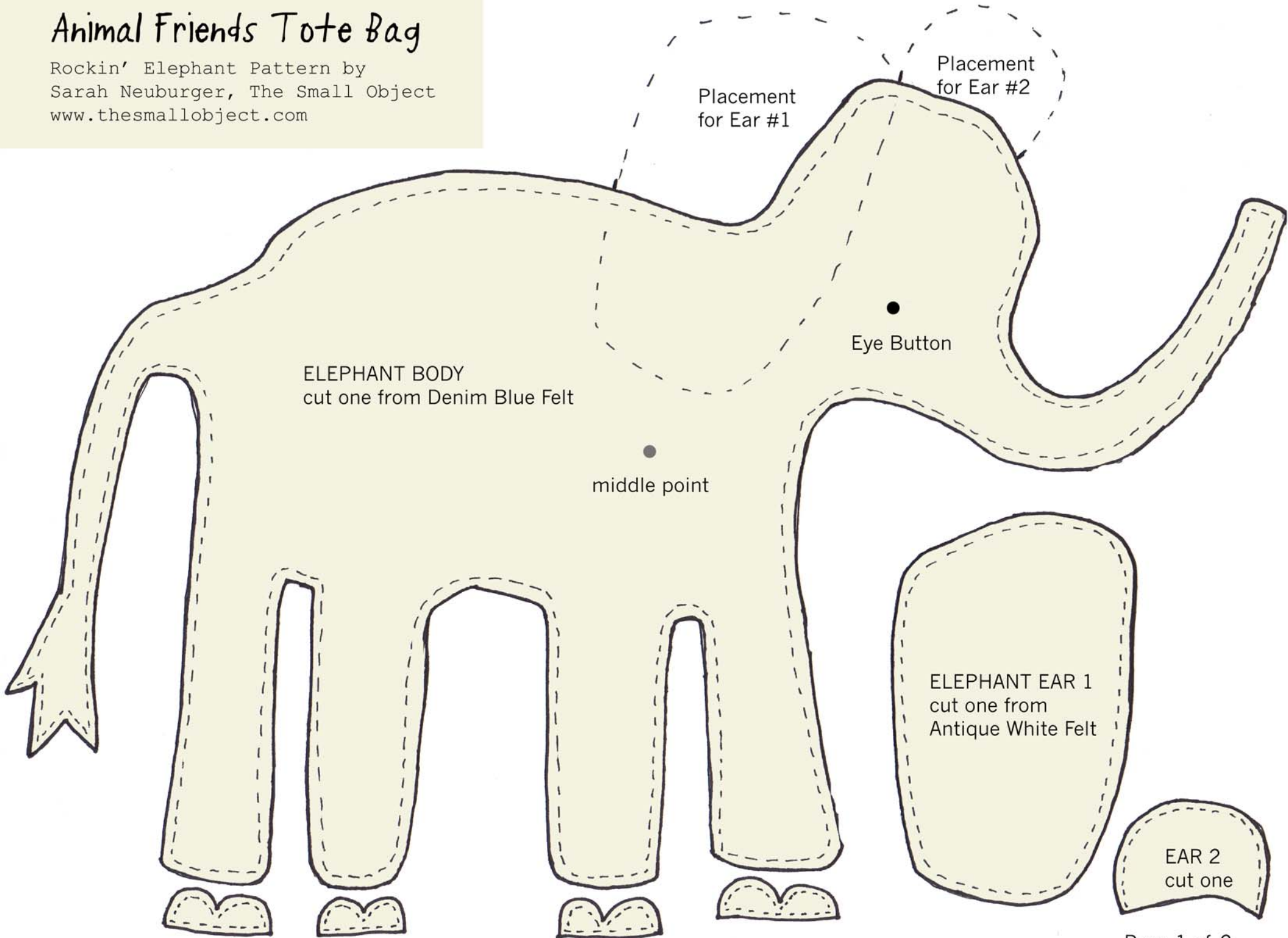


Animal Friends Tote Bag

Rockin' Elephant Pattern by
Sarah Neuburger, The Small Object
www.thesmallobject.com

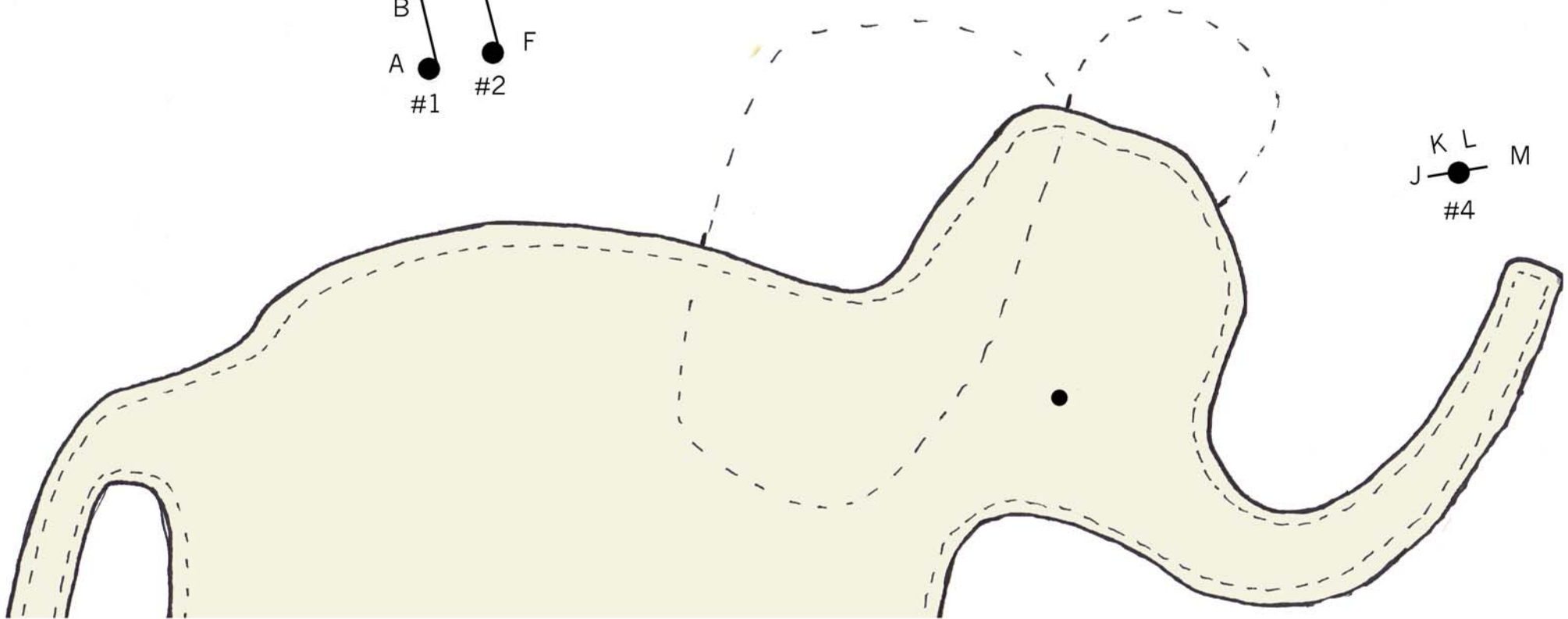
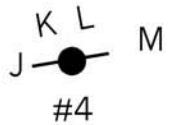
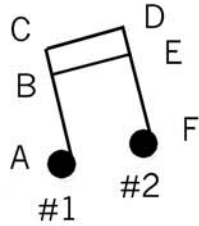


Animal Friends Tote Bag

Rockin' Elephant Pattern by
Sarah Neuburger, The Small Object
www.thesmallobject.com

PLACEMENT OF MUSICAL NOTES

Sew using DMC Embroidery Floss #310, Black



LINE UP TEMPLATE according to the elephant here on your appliqued bag front so you can make small pencil marks where each of the bead "notes" should be sewn onto the front of the bag.