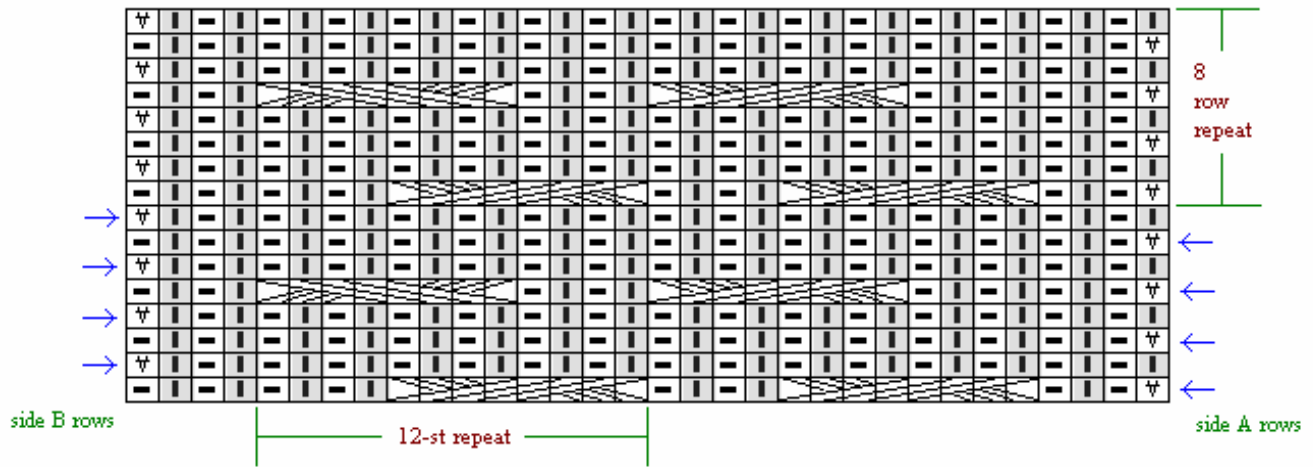





REVERSIBLY CABLED BRAID BLOCK



-  = k on side A, p on side B
-  = slip (do not work)
-  = p on side A, k on side B



= 4/4 ribbed RC cable, place 4 sts onto cable needle & hold in back of work, rib the next 4 sts from regular needle, then rib the 4 sts from cable needle



= 4/4 ribbed LC cable, place 4 sts onto cable needle & hold in front of work, rib the next 4 sts from regular needle, then rib the 4 sts from cable needle