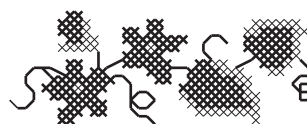


"STILL STITCHING"



www.susangreeningdavis.com

Susan Greening Davis - Designer - Instructor of Needlework Workshops

"Needles and Pins Band"

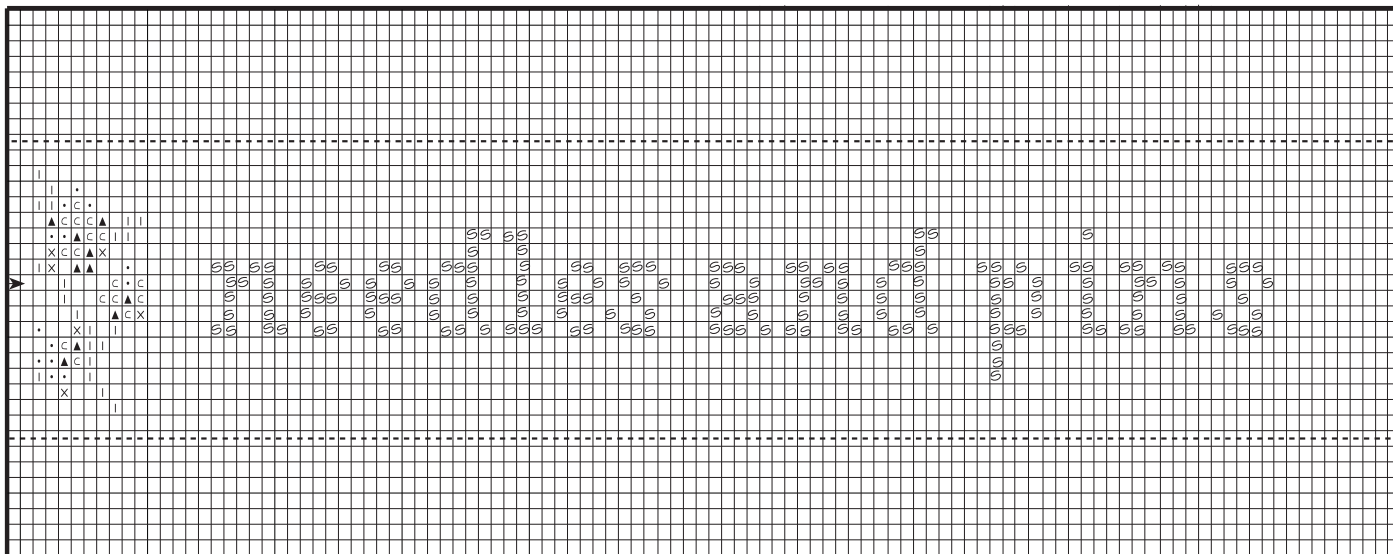
Basket Band Instructions:

1. 14 Count Aida - Cut Fabric 4" x 24"...but the length will vary depending on your basket size
2. Cross Stitch with 2 separated lengths of floss by using the appropriate symbols.
3. Count up 1 naked square above and below the design. Fold excess fabric to back and backstitch with 2 separated lengths of #316 through both layers of fabric.

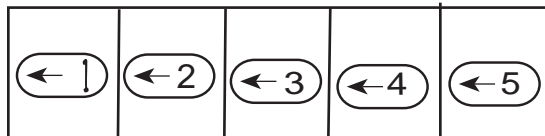
DMC#

- ▲ - 316 Medium Antique Mauve
- X - 3052 Medium Green Gray
- I - 3051 Dark Green Gray
- - 3727 Light Antique Mauve
- C - 778 Very Light Antique Mauve
- s - 3052 Medium Green Gray

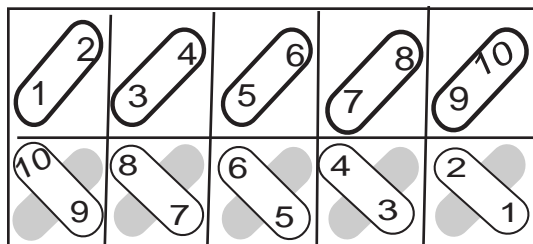
The dash line above and below is where the backstitch goes.



Backstitch



CROSS STITCH



1st Journey

2nd Journey
Gray stitches
are already
completed with
1st Journey

taught by Susan Greening Davis a DMC "International Teacher of the Year"